

October 2019

## Volpe Transportation Center Visit

Staff from the RI Division of Statewide Planning recently took a field trip to Cambridge, MA, to visit the USDOT's Volpe Transportation Center. We were joined by staff from the RI Department of Transportation, the RI DOA, and from neighboring metropolitan planning organizations (MPOs) in Massachusetts and Connecticut. Our hosts provided us with a jam-packed day of peer education and information about resources for MPOs. The group learned about Volpe's work in areas such as automated vehicles/connected vehicles, infrastructure modernization and resilience, maritime safety, and performance management.

For more information about the Volpe Center and what they do, please visit their website: [www.volpe.dot.gov](http://www.volpe.dot.gov)

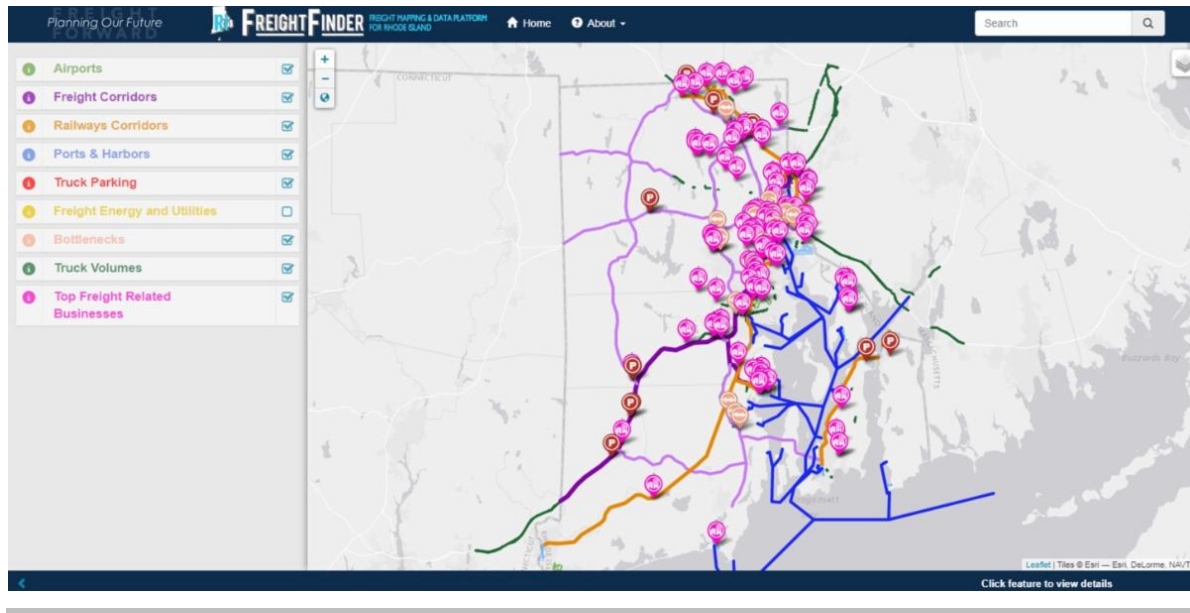


## RI Freight Finder Is Online

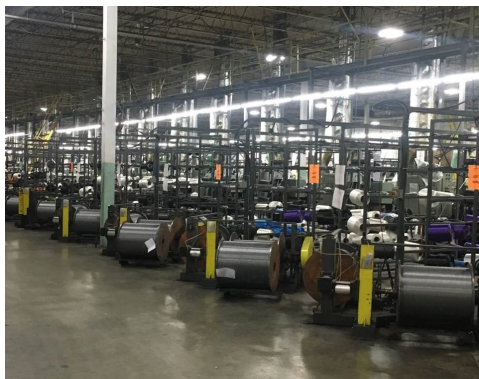
The Rhode Island Division of Statewide Planning has launched the RI Freight Finder, an online interactive map containing the State's freight-specific data. The mapper includes information on the State's freight corridors, truck volumes, truck bottlenecks, truck parking facilities, railway corridors, ports and harbor parcel information, airport facilities, energy and utility data, as well as freight related business information. Through this effort, the Division has made freight transportation data more readily available to both the public and private sector. The Division hopes that others can leverage this informational framework to further their planning and economic development efforts.

All the data layers shown in this application will also be made available on the Rhode Island Geographic Information System Website (RIGIS) at [www.rigis.org](http://www.rigis.org). For more

information, please contact [Joshua.Oneill@doa.ri.gov](mailto:Joshua.Oneill@doa.ri.gov) or check out the [freight planning webpage](#) for more information.



## Freight Committee Tours Hope Global



On September 18, the Freight Advisory Committee held its quarterly meeting at the headquarters of the Hope Global company in Cumberland. Founded in 1883 as the Hope Webbing Company in Pawtucket, Hope Global is an international manufacturer employing more than 2,000 people at manufacturing facilities in the US, Mexico, China, and the Czech Republic. The committee heard from C.E.O. Leslie Taito about the company's global manufacturing operations and

the logistics of their freight trucking across North America. Committee members learned that a lack of truck parking in Rhode Island is a problem for their truck fleet, as many truckers are parking in Massachusetts and Connecticut because Rhode Island has few facilities. Members also heard about the challenges they face with Rhode Island's roads and bridges.

The Committee then toured the 270,000 square-foot manufacturing facility to learn more about the daily operations. This facility creates parachute cords, bootlaces, and bungee cords for the U.S. military, as well as shoelaces and bootlaces for commercial shoe companies such as Timberland.

The Freight Advisory Committee will continue to work with private sector freight companies to provide a better understanding of industry perspectives on freight-related planning issues. For more information about our freight work, please contact Supervising Planning Josh O'Neill at [Joshua.Oneill@doa.ri.gov](mailto:Joshua.Oneill@doa.ri.gov)

**Division of Statewide Planning Open House - October 4, 2019**



*you're*  
**Invited**

*Please Join Us for an Open House!*

*RI Division of Statewide Planning  
Friday, October 4 from 11am-3pm  
235 Promenade St., Suite 230 Providence*

## **From the Associate Director**

Have you taken the bus or train in Rhode Island? I'm happy to say that I have, and I will continue to try transit, my personal way of trying to lead by example. With our move to space at The Foundry, I have found that I can take the train (from Wickford Junction), get on the autonomous shuttle outside the train station, and end up at The Foundry in two stops. Coming back the other way gets a little more complicated, the timing isn't ideal, and I can't run errands easily. You know what? That's ok. It's not about me. It's about future generations. It's about the importance of clean air over convenience, the importance of conservation, congestion mitigation, and healthy communities over quick trips for consumer goods or services.

One of the questions I keep asking myself: if I don't see how the system is working, how can I make suggestions to help fix what's broken? So I get up a half hour early to make the train, and stay an hour later. I take motion sickness medication and take the bus. I walk, and make myself aware of the less desirable conditions and places where more transit would be helpful. I try looking at places that do things well, and acknowledge that they still have gaps, but it's a matter of triaging the areas of most need. It really all comes down to one question: how do we connect?

Sometimes, I wonder why I'm bothering with paper straws, and paper bags, shifting to solar and electric, thinking about the recyclable nature of containers, trying to compost, recycle, and eat locally, and taking the train, when others seem to care so little. How much impact can I, or my household, have? The answer is: we are all just one person. We are all just one household. Then we are two and three and four. We are an interest group, we are a community, we are a state, we are a movement...

I became a little giddy at the thought of being able to use one of my favorite quotes, ever, in this column. It came to me through author Madeleine L'Engle's book, "A Ring of Endless Light". It's from the Robert Frost poem, *Two Tramps in Mud Time*. Then I balked a little because it uses a capitalized "Heaven".

Well, I'm still going to share it. "But yield who will to their separation, // My object in living is to unite // My avocation and my vocation // As my two eyes make one in sight.



//Only where love and need are one,// And the work is play for mortal stakes,// Is the deed ever really done// For Heaven and the future's sakes."

Have you taken the bus or train in Rhode Island? You should try it sometime. Not only might you find you enjoy it and discover ways that it can be improved (and ways you can suggest solutions), but maybe, just maybe, you might make a difference...

---

## Upcoming Meetings

### Technical Committee

**October 4 at 9AM**

DOA Conference Room 2A  
One Capitol Hill, Providence

### State Planning Council

**October 10 at 9AM**

DOA Conference Room 2A  
One Capitol Hill, Providence

### Transportation Advisory Committee

**October 24 at 5:30PM**

DOA Conference Room 2A  
One Capitol Hill, Providence

**All meetings are open to the public!**

### **PHOTO TRIVIA:**

Do you know where in RI this building is located?

See the answer at the bottom of the newsletter.



---

## Upcoming Events

**October 4 Open House at RI Statewide Planning**(see above). Drop by and take a tour of our new office, have a snack, and chat with your favorite State planner! Enter through the north ("back") door of The Foundry, on Beach Street. Turn left at Nero's Cafe: we're at the end of the hallway. Time: 11A-3P.

- Location: The Foundry, Suite 230- 235 Promenade St., Providence.

**October 11 Coastal Resilience in the Urban Landscape: A Walking Tour.** This walk will bring historic perspective and future projections of how flooding will affect the Providence waterfront. Discussion will include how this will influence waterfront use, design, and longevity, and how incorporating natural habitat and a more accessible waterfront can benefit the way people to live, work and play in Providence. Time: 11A-1P. Pre-registration is required: (401) 874-6805 or [rhodeislandseagrant@gmail.com](mailto:rhodeislandseagrant@gmail.com).

- Location: Meet at the hurricane barrier along South Water Street. Free parking for the event will be provided in the Rhode Island DOT parking lot under the bridge, under the highway at 665 Bridge Street.

**October 17-18 SNEAPA 2019.** The Southern New England American Planning Association (SNEAPA) Conference is an annual two-day planning conference hosted by the Connecticut, Rhode Island, and Massachusetts chapters of APA. It draws nearly six hundred planners, landscape architects, architects, engineers, academics, students and others. Online registration ends on October 11.

- Location: MGM Springfield- One MGM Way, Springfield, MA.

### URI Landscape Architecture Lecture Series:

Location: Lectures take place at the Beupre Chemistry Building, Room 105, 140 Flagg Rd., Kingston. Time: All lectures begin at 7PM.

- **October 17** Emily McCoy, Principal, Design Workshop, Denver, CO: "Landscape Architecture's Climate Imperative."
- **November 7** Terrence DeWan, Principal, Terry DeWan and Associates, Yarmouth, ME. "DON'T EVEN THINK ABOUT IT: The Landscape Architect's Role in Alternative Energy."

**October 29-30** [North East Recycling Conference](#). The North East Recycling Council (NERC) Conference is designed to provide attendees with the opportunity to learn, share ideas, discuss issues, and network. This year's theme is "Much Ado About Plastics."

- Location: Graduate Providence, 11 Dorrance St., Providence.

**October 30** [Rhode Island Green Infrastructure "Expo 2019" Trade Show](#) The Expo is hosted by the RI Green Infrastructure Coalition and will feature exhibitors, short talks, and tours of green infrastructure installations in Roger Williams Park. It will provide networking opportunities and will showcase innovative products and services being used in the construction and maintenance of green stormwater infrastructure across RI and throughout the industry. Time: 8:30A-12:30P.

- Roger Williams Park Casino, 1000 Elmwood Ave., Providence.

---

## Grant Opportunities

**October 3** Deadline for "[Access to Historical Records: Archival Project](#)" grant offered by the National Historical Publications and Records Commission. Funding is available for projects that ensure online public discovery and use of historical records collections. The Commission is especially interested in collections of America's early legal records.

**October 3** Deadline for the "[Public Engagement with Historical Records](#)" grant offered by the National Historical Publications and Records Commission. The grant will fund projects that encourage public engagement with historical records, including the development of new tools that enable people to engage online.

**October 11** "[Landscape-Scale Restoration Grant](#)" program deadline, offered by the US Forest Service. The purpose of the program is to encourage collaborative, science-based restoration of priority forest landscapes and support priorities identified in State Forest Action Plans.

**October 20** [Smart Cities Collaborative](#) application deadline. Transportation for America is accepting applications for the third cohort of cities. This year, in order to benefit from new mobility technologies, cities want to understand how to leverage a critical but often-ignored asset: the curb. The 2020 cohort will be divided into pilot cities and peer cities: pilot cities will receive support to conduct a one-month pilot using new curb management technology.

**October 25** [RIDEM Local Open Space Grants](#) deadline. This grant program provides up to fifty percent matching funds to municipalities, land trusts and non-profit conservation land organizations to preserve valuable open space throughout the state. RIDEM anticipates awarding approximately \$4 million for projects; individual grant requests up to \$400,000 will be considered.

**December 11 [RIDEM Outdoor Recreation Grant Program](#)** deadline. This grant program provides matching funds to cities and towns and recognized Native American tribes for the acquisition, development and renovation of outdoor recreational lands and facilities. Funding categories include Large Recreation Development grants (up to 80% matching funds to a maximum of \$400,000), Small Recreation Development Grants (up to 80% matching funds to a maximum of \$100,000), and Recreation Acquisition grants (up to 50% matching funds to a maximum of \$400,000).

---

## Planning Articles of Interest

[Planners urge "blue sky" thinking on future of State's transit system](#)

[So-called "adult dorms" are here to stay](#)

[Meet Foster's official fence viewer](#)

[Newport moves to block Carpionato's \\$100M development at Newport Grand property for 6 months](#)

[Seaweed collector sues over beach-access rights](#)

[Reed announces \\$1.7 million for RI parks and recreation](#)

---

## RI Statewide Planning contacts:

Meredith Brady, Associate Director

(401) 222-6496

Meredith.Brady@doa.ri.gov

Benny Bergantino, Principal Planner

(401) 222-1755

Benny.Bergantino@doa.ri.gov

Linsey Callaghan, Assistant Chief

401/222-6479

Linsey.Callaghan@doa.ri.gov

Paul Capotosto, Fiscal Management Officer

(401) 222-6170

Paul.Capotosto@doa.ri.gov

Michael D'Alessandro, AICP- Supervising  
Planner

(401) 222-2177

Michael.Dalessandro@doa.ri.gov

Christina Delage Baza, Data Analyst I

(401) 222-6481

Christina.DelageBaza@doa.ri.gov

Vincent Flood, Supervising Planner

(401) 222-1243

Vincent.Flood@doa.ri.gov

Kim Gelfuso, Information Services Technician II

(401) 222-5764

Kim.Gelfuso@doa.ri.gov

Paul Gonsalves, Principal Planner

(401) 222-1756

Paul.Gonsalves@doa.ri.gov

Caitlin Greeley, Principal Planner

(401) 222-2848

Caitlin.Greeley@doa.ri.gov

Roberta Groch, AICP- Assistant Chief

401/222-4720

Roberta.Groch@doa.ri.gov

Nancy Hess, Supervising Planner

(401) 222-6480

Nancy.hess@doa.ri.gov

Benjamin Jacobs, Principal Research Technician

401-222-3949

Benjamin.Jacobs@doa.ri.gov

Kevin Nelson, Supervising Planner

(401) 222-2093

Kevin.Nelson@doa.ri.gov

Josh O'Neill, AICP- Supervising Planner

(401) 222-4849

Josh.Oneill@doa.ri.gov

Mason Perrone, Principal Planner

401-222-7966

Mason.Perrone@doa.ri.gov

Catherine Pitassi, Executive Assistant

401-222-7901

Catherine.Pitassi@doa.ri.gov

## PHOTO TRIVIA ANSWER:

Stephen Harris House ("The Shunned House"), 1763

Providence

Photo: Realtor.com