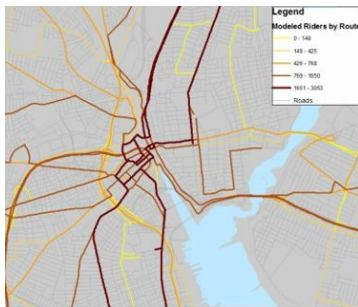


June 2019

The Rhode Island Travel Demand Model



Statewide Planning recently finished enhancements to the Rhode Island Travel Demand Model (RISM), a powerful tool that allows the state to forecast how Rhode Island's transportation network will perform over the next twenty years. Travel demand forecasts can be used to study highway and transit project alternatives, perform air quality conformity analysis, develop long-range transportation plans and help make more informed decisions.

The last two years have been an exciting time to work on the RISM, with four planned upgrades completed: a RIPTA rider survey that provides data about riders who use the RIPTA system; a transit assignment to determine the mode choices being made by travelers, in terms of taking the bus vs. driving; a truck model to help determine different factors that produce truck traffic; and smaller, annual updates to the input data sets, as appropriate, to keep the data "fresh."

To view a full report about the model, please see our website at www.planning.ri.gov or contact Benjamin Jacobs, Principal Research Technician, at Benjamin.Jacobs@doa.ri.gov.

Cranston Street Armory Re-Use Plan

At nearly 200,000 square feet, the historic Cranston Street Armory, located on the West Side of Providence, is one of the largest armories in the country and is listed in the National Register of Historic Places. Completed in 1907, the Armory has stood mostly empty and unused since the RI National Guard ceased operations there in 1996. In 2017, the State of Rhode Island's Division of Capital Asset Management and Maintenance (DCAMM) and their consultants, Utile, started a process with the goal of returning the Armory to active use. The "Cranston Street Armory Reuse Plan" will serve as a road map for the State to work with private partners in this effort. The project steering committee includes: local residents; the South

Providence Neighborhood Association; the West Broadway Neighborhood Association; the RI Hispanic Chamber of Commerce; Divisions within the Department of Administration (like Planning and Purchasing), the RI Historic Preservation and Heritage Commission, and Commerce RI; the City of Providence; the Providence Preservation Society; and other stakeholders.

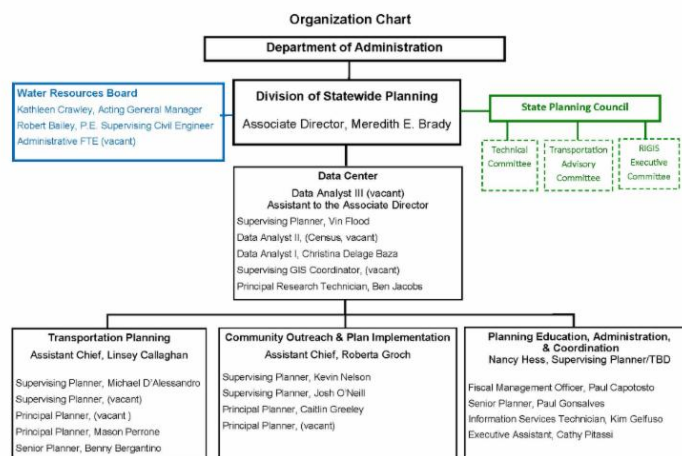


A Request For Information (RFI) was issued in the winter of 2018-19 and resulted in four teams submitting ideas for re-use of the building. A Request For Proposals will be issued in the summer of 2019. If you would like more information about the RFP, please contact Jonathan Depault, Chief of Project Management at DCAMM, at Jonathan.Depault@dcamm.ri.gov.

For more information about the Armory re-use project, please see the website at www.cranstonstreetarmory.org.

From the Associate Director *Division of Statewide Planning Re-Alignment*

I have been calling it a reorganization, but HR insisted that it's really a realignment. Whatever you call it, I was going to write a separate column this month, until I realized that the realignment really is at the root of the process of re-defining the Division of Statewide Planning: review, interviews, discussion, negotiation, compromise, vision, bringing people together, re-creating a functioning organization.



Re-create: the word, strictly, is not like the other "re" words, such as this year's SNEAPA theme: Rethink. Reinvest. Renew. (A helpful hint, perhaps, to [submit your session](#) proposals for the 2019 SNEAPA conference!) Re-create really requires a hyphen in order to separate it from the word recreate, *to take recreation, refreshment of strength and spirits after work*. Yet in some ways, re-creation isn't all that different from recreation. I want to restore spirits, renew purpose, and refresh our mission as a Division.

The new Org Chart for DSP is shown above, and it tells a story of an organization in the midst of change. By the end of summer, we will be staffed-up and ready to set goals for each of our four functional units, but what's more important is what you don't see, and what won't be happening. Our groups are not divided strictly from each other. They are intended to work with each other, as teams, but not competing teams. Their lead staff aren't separated from the teams they lead. We strive to be change-ready, malleable,

adaptable, in the face of climate change, natural and political.

Some days are easier than others, but we are an office with the purpose of building on a strong foundation, building knowledge, and building each other up. Be a builder not a breaker. Be an instructor not a bully. Be an advisor not an ideologue.

Challenge too big? Too much on your plate (and by that I mean the 1,000 emails in your inbox and the piles on your desk): don't forget to recreate, or even, sometimes, re-create. Look at things a different way. Realign yourself.

Upcoming Meetings

Technical Committee

June 7 at 9AM

DOA Conference Room 2A
One Capitol Hill, Providence

State Planning Council

June 13 at 9AM

DOA Conference Room 2A
One Capitol Hill, Providence

Transportation Advisory Committee

June 27 at 5:30PM

DOA Conference Room 2A
One Capitol Hill, Providence

All meetings are open to the public!

PHOTO TRIVIA:

Do you know where in RI is this building located?

See the answer at the bottom of the newsletter.



Upcoming Events

June 6 Brownfield Liability Seminar. Come join the New Jersey Institute of Technology Technical Assistance to Brownfield Communities Program (NJIT TAB) and the Rhode Island Department of Environmental Management (RIDEM) for a unique opportunity to dispel the many myths of brownfield liability. NJIT TAB & RIDEM will be giving communities a detailed overview of: Steps to Mitigate Federal & State Brownfield Liability; Funding sources for federal & State Brownfield redevelopment projects; and Voluntary Cleanup Program and Case studies. Time: 10AM - 12PM. Free, but [registration](#) is required.

- Location: RIDEM- 235 Promenade Street, Room 300, Providence.

June 14 2019 SNEAPA Conference session proposal deadline. The annual Southern New England American Planning Association Conference (SNEAPA) will be held on October 17 & 18 in Springfield, MA. Submit your session proposals today! More information on the conference is available at www.sneapa.org.

June 20 2019 RI Preparedness Conference: "Rhode to Recovery." The Rhode Island Preparedness Conference will bring together more than two hundred participants for sessions around the theme of disaster recovery. Time: 8:30A - 4:30P. The keynote speaker this year is Peter Gaynor, Acting Administrator of FEMA, former RIEMA Director, and former PEMA Director. Free, but [registration](#) is required.

- Location: CCRI- Knight Campus, 400 East Ave., Warwick.

June 20 [Age-Friendly RI: Power Up 2019](#) Panel presentations will showcase local age-friendly initiatives from inside RI and beyond. Local leaders will discuss a variety of models for approaching age-friendliness in Rhode Island and offer ideas you can use in your city or town. Time: 8A-12P. Free, but [registration](#) is required, as space is limited (light breakfast included).

- Location: Crown Plaza Hotel, 801 Greenwich Ave., Warwick.

June 26 & 27 [Northeast Passenger Transportation Association \(NEPTA\) Conference](#) and Expo. Learn about the latest trends and technologies facing the future of mobility and public transit.

- Location: Crown Plaza Hotel, 801 Greenwich Ave., Warwick.

July 19 [APA-RI's Summer Social at the PawSox](#) Join fellow planners and their families at McCoy Stadium for food, fun, and to see the PawSox play the Charlotte Knights! Tickets are \$XX and include dinner and admission to the game. Please see the APA-RI website for details and [to purchase tickets](#).

Grant Opportunities

June 10 [USDA Community Facilities Technical Assistance and Training Grant](#) deadline. The US Department of Agriculture will make grants to public bodies and private nonprofit corporations, (such as States, counties, cities, townships, and incorporated towns and villages, boroughs, authorities, districts, and Indian tribes on Federal and State reservations) to provide associations Technical Assistance and/or training with respect to essential community facilities programs. The Technical Assistance and/or training will assist communities, Indian Tribes, and Nonprofit Corporations to identify and plan for community facility needs that exist in their area. Once those needs have been identified, the Grantee can assist in identifying public and private resources to finance those identified community facility needs.

June 10 [HUD Choice Neighborhoods Planning Grants](#) deadline. The Choice Neighborhoods program leverages significant public and private dollars to support locally driven strategies that address struggling neighborhoods with distressed public or HUD-assisted housing through a comprehensive approach to neighborhood transformation. Local leaders, residents, and stakeholders, such as public housing authorities, cities, schools, police, business owners, nonprofits, and private developers, come together to create and implement a plan that revitalizes distressed HUD housing and addresses the challenges in the surrounding neighborhood.

June 12 [Digital Projects for the Public](#) application deadline. This National Endowment for the Humanities' program supports projects that interpret and analyze humanities content in primarily digital platforms and formats, such as websites, mobile applications and tours, interactive touch screens and kiosks, games, and virtual environments. All projects should demonstrate the potential to attract a broad, general, nonspecialist audience, either online or in person at venues such as museums, libraries, or other cultural institutions. Applicants may also choose to identify particular communities and groups, including students, to whom a project may have particular appeal.

June 12 [National Archives' Publishing Historical Records](#) application deadline. The National Historical Publications and Records Commission of the National Archives seeks proposals to publish documentary editions of historical records. Projects may focus on

broad historical movements in U.S. history, such as politics, law (including the social and cultural history of the law), social reform, business, military, the arts, and other aspects of the national experience, or may be centered on the papers of major figures from American history. Local government agencies and Federally-acknowledged or state-recognized Native American tribes or groups are eligible.

June 30 [Battlefield Land Acquisition Grant deadline](#) The American Battlefield Protection Program (part of the National Park Service) is helping States and local communities acquire and preserve threatened Revolutionary War, War of 1812, and Civil War Battlefields. Each grant requires a dollar-for-dollar non-Federal match. Grants are available to purchase 1) land in fee simple or 2) permanent, protective interests in land (easements) at battlefields. State, City or township governments are eligible.

Planning Articles of Interest

[Hope Mill denial overturned in stunning fashion](#)

[Offering child care at meetings may be key to diversifying civic engagement role](#)

[Microtransit: How cities are, and aren't, adopting transit technology](#)

[Here's why we have an affordable housing crisis](#)

[City approves new solar deal worth \\$900,000](#)

[Fewer babies as US birthrate fails to rebound with economy](#)

[Narragansett Beer to open new brewery in Providence](#)

Check out our website for plans, maps, publications, and more!

www.planning.ri.gov

RI Statewide Planning contacts:

Meredith Brady, Associate Director
(401) 222-6496
Meredith.Brady@doa.ri.gov

Paul Gonsalves, Senior Planner
(401) 222-1756
Paul.Gonsalves@doa.ri.gov

Benny Bergantino, Senior Planner
(401) 222-1755
Benny.Bergantino@doa.ri.gov

Caitlin Greeley, Principal Planner
(401) 222-2848
Caitlin.Greeley@doa.ri.gov

Linsey Callaghan, Assistant Chief
401/222-6479
Linsey.Callaghan@doa.ri.gov

Roberta Groch, AICP- Assistant Chief
401/222-4720
Roberta.Groch@doa.ri.gov

Paul Capotosto, Fiscal Management Officer
(401) 222-6170
Paul.Capotosto@doa.ri.gov

Nancy Hess, Supervising Planner
(401) 222-6480
Nancy.hess@doa.ri.gov

Michael D'Alessandro, AICP- Principal Planner
(401) 222-2177
Michael.Dalessandro@doa.ri.gov

Benjamin Jacobs, Principal Research Technician
401-222-3949
Benjamin.Jacobs@doa.ri.gov

Christina Delage Baza, Data Analyst I
(401) 222-6481
Christina.DelageBaza@doa.ri.gov

Kevin Nelson, Supervising Planner
(401) 222-2093
Kevin.Nelson@doa.ri.gov

Vincent Flood, Supervising Planner
(401) 222-1243
Vincent.Flood@doa.ri.gov

Josh O'Neill, AICP- Supervising Planner
(401) 222-4849
Josh.Oneill@doa.ri.gov

Kim Gelfuso, Information Services Technician II
(401) 222-5764
Kim.Gelfuso@doa.ri.gov

Catherine Pitassi, Executive Assistant
401-222-7901
Catherine.Pitassi@doa.ri.gov

PHOTO TRIVIA ANSWER:

Governor William Sprague mansion (1790 and 1864)

Cranston

Photo: *East Side Monthly* website