

Rhode Island Department of Administration
Division of Statewide Planning
March 2018

MPO Certification for Division of Planning



On Feb. 21 and 22, the Division of Statewide Planning participated in the required four-year Metropolitan Planning Organization (MPO) re-certification review. The Division of Planning is the legally designated MPO for the entire state and is responsible for transportation planning and approval of federal transportation funding for Rhode Island. Officials from the Federal Highway Administration (FHWA) and the Federal Transit Administration (FTA) reviewed the MPO program for compliance with Federal law in areas such as Civil Rights and

public participation, regional coordination, freight planning, long-range transportation planning, and performance-based planning and programming. This review provides feedback to staff (who also serve as MPO staff) and to the State Planning Council. Associate Director Parag Agrawal says, "The outcome of this review will be a re-certification report that will spell out areas of corrective actions to be addressed within a specific time frame, as well as recommendations for the planning process in Rhode Island for the next four years."

The staff of the Division of Statewide Planning will use this report to implement plans, policies, and legislation to meet all the requirements of federal law and to improve the overall planning process going forward.

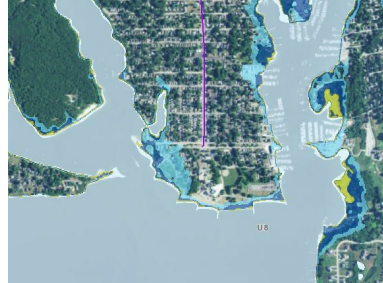
Sea Level Rise Requirements Workshop Held

The Rhode Island Division of Planning hosted planners from seven RI communities for a workshop about the mandatory sea level rise training for planning board members that went into

the URI Coastal Resources Center led the

effect in January. The law (which passed in 2017) was introduced by Representative Lauren Carson, who also participated in the workshop via conference call and explained the background for the legislation and compliance going forward. Nancy Hess from the Division of Statewide Planning, Jennifer West from the Narragansett Bay National Estuarine Research Reserve, and Pam Rubinoff from

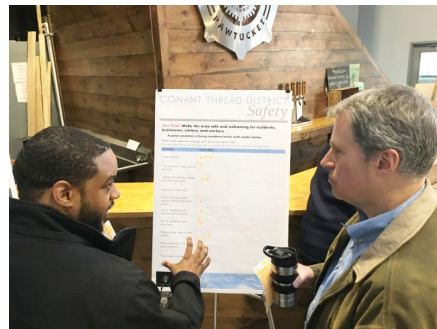
workshop and showed available resources that could meet the training



requirement, such as the PREP-RI online learning modules. Other documents available through the Division of Planning and the EC4 Climate Change websites. For more information, please contact nancy.hess@doa.ri.gov.

Pawtucket Station Open House a Success

On February 28, the team working on the Pawtucket/Central Falls rail station held an open house on the new transit-oriented development (TOD) district, now known as the "Conant Thread district." The cities of Central Falls and Pawtucket, the Pawtucket Foundation, RIPTA, RIDOT and the Division of Statewide Planning- along with consultants The Horsley Witten Group and DK Communications--are all playing a role in this important project that will improve access to jobs and stimulate local development. For more information, please see the new Conant Thread website: www.conantthread.com.



Photos: K. Moravec, The Horsley Witten Group

Planning Employee Spotlight

Christina Delage Baza is a Geographic Information Systems (GIS) Specialist II who has been with the Division of Statewide Planning since October 2001. Her responsibilities include designing and managing the Division's relational databases, forms, and reports, as well as spatial analysis, data development, modeling, and cartography for planning areas such as Transportation, Climate Change, and Local Comprehensive Planning. Many of her online maps can be viewed at ridoa.maps.arcgis.com. Christina received her BS in Marine Science from the University of South Carolina,



Columbia, and Master's degree in GIS and Remote Sensing from the University of New South Wales, Australia. Christina has traveled to over twenty-one countries and has lived in Scotland and Australia. Travel only increased her interest in photography: in 2007, she won third place in the "Scenes of Rhode Island" art competition and currently has photographs displayed in the Atrium Gallery at One Capitol Hill. Outside the office, Christina can be found with her family hiking in the woods or playing with her two young children. Contact Christina at Christina.DelageBaza@doa.ri.gov

We want your news!

Do you have an article about a planning project or item of interest from your town that you would like to include in our newsletter? Please [contact us](#) and you might see it here.

Upcoming Meetings

Technical Committee

April 6 at 9AM

Conference Room 2A
DOA, One Capitol Hill
Providence

State Planning Council

April 12 at 9AM

Conference Room 2A
DOA, One Capitol Hill
Providence

Transportation Advisory Committee

April 26 at 5:30PM

Conference Room 2A
DOA, One Capitol Hill
Providence

PHOTO TRIVIA:

Do you know where in RI this building is located?

See the answer at the bottom of the newsletter.



Events

March 29 [Grow Smart RI's 2018 "Power of Place" Summit](#). 8:30AM-5PM, RI Convention Center. Join 500 business, civic and elected leaders, development and real estate professionals, architects, builders, farmers, conservationists and policy experts from across the region to learn from one another about what's working when it comes to shaping places.

March 30 [CNU New England Urbanism Summit](#) "City Learning: How Our Cities and Town Learn From Each Other." 9AM-5:30PM. Location: District Hall, 95 Northern Ave.,

Boston. Registration and schedule are [here](#).

April 3 & 4 "[Rhode Island Clean Transportation Listening Session](#)". The Rhode Island Department of Environmental Management, Office of Energy Resources, and Department of Transportation – on behalf of the Executive Climate Change Coordinating Council (EC4) – will be hosting two public listening sessions to hear ideas on how to reduce greenhouse gas emissions from the transportation sector, increase the resilience of transportation-related infrastructure, and design solutions with environmental justice communities in mind. Advance registration is encouraged: doa.climatechangeri@doa.ri.gov

- April 3, 2PM – 4PM: Newport City Hall, 43 Broadway, Newport
- April 4, 4PM – 6PM: Providence Career and Technical Academy, 41 Fricker Street, Providence

[URI Lecture Series:](#)

- **April 5** "Waterproofing New York," Signe Nielsen, Principal, Mathews Nielsen Landscape Architects, New York City. 7PM – 9PM. Location: Richard E. Beupre Center for Chemical & Forensic Sciences, Room 105A, 140 Flagg Road, Kingston.
- **April 19** "World Trends and Landscape Architecture," Mario Schjetnan, Principal, Grupo Urbano, Mexico City. 7PM – 9PM. Richard E. Beupre Center for Chemical & Forensic Sciences, Room 105A, 140 Flagg Road, Kingston.
- **April 26** "Transitions," Jamie Maslyn Larson, Principal, Wagner Hodgson, Burlington/Hudson NY. 7PM – 9PM. Location: Richard E. Beupre Center for Chemical & Forensic Sciences, Room 105A, 140 Flagg Road, Kingston

April 26-28: [Encuentro 2018:](#) The 3rd Convening of Latinos in Heritage Conservation and the 33rd Annual Rhode Island Statewide Historic Preservation Conference. Location: Joseph A. Doorley Jr. Municipal Building, 444 Westminster Street, Providence. See preservationconferenceri.com for registration and information.

May 11 Deadline for [Session Proposals: 2018 SNEAPA Conferene](#), Hartford. Share your expertise and experiences in planning and development with a session at the 2018 Southern New England American Planning Association (SNEAPA) Regional Planning Conference. The Connecticut Chapter of the American Planning Association (CCAPA) is hosting this annual event at the Connecticut Convention Center in Hartford, CT on October 18-19, 2018. Send submissions to programs@SNEAPA.org.

Grant Opportunities

April 12 Deadline for the National Endowment for the Arts' "[Challenge America](#)" grant category, offering support to small- and mid-sized organizations for projects that extend the reach of the arts to under-served populations: those whose opportunities to experience the arts are limited by geography, ethnicity, economics, or disability.

April 30 Deadline for "[National Urban and Community Forestry Challenge Cost-Share Grant Program](#)" applications for urban and community forestry projects that have national or multi-state application and impact.

May 1 Deadline for National Endowment for the Humanities' "[Preservation Assistance Grants](#) for Smaller Institutions" applications: these grants help small and mid-sized

institutions—such as libraries, museums, historical societies, archival repositories, cultural organizations, and town and county records offices—improve their ability to preserve and care for their significant humanities collections.

Planning Articles of Interest

[Can pop-ups pave the way to thriving public space in world's cities?](#)

[Massachusetts bill would make it easier for cities and towns to ease housing crisis](#)

[Approvals bring \\$7.4 million mill redevelopment in Pawtucket closer to reality](#)

[There aren't enough babies being born in the U.S. for Toys R Us to survive](#)

[Multiple studies find ride-hailing contributes to congestion and transit losses](#)

Check out our website for plans, maps, publications, and more!

www.planning.ri.gov

Statewide Planning contacts:

Parag Agrawal, AICP- Associate Director

401/222-6496

Parag.Agrawal@doa.ri.gov

Linsey Callaghan, Assistant Chief

401/222-6479

Linsey.Callaghan@doa.ri.gov

Paul DiGiuseppe, Assistant Chief

401/222-1233

Paul.DiGiuseppe@doa.ri.gov

Roberta Groch, AICP- Assistant Chief

401/222-4720

Roberta.Groch@doa.ri.gov

PHOTO TRIVIA ANSWER: Lucien Sharpe carriage house (1885)-

home of the Brown University Urban Environmental Lab

Photo: Providence Preservation Society [website](#)

Providence County, R.I.



Respond to your
2018 Census today!

Census takers will start
to follow-up May 9.

United States
Census
Bureau
2018 Census Test

